

TECHNICAL DATA

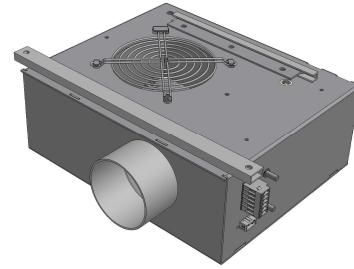
DAN DRYER® BUILD-IN DRYER MODEL 142



Dryer: DAN DRYER® hand dryer.

Housing: 2 mm raw or powder-coated (white) aluminium plate.

Height excl. outlet nozzle: 246 mm
Height incl. outlet nozzle: 293 mm
Width: 297 mm
Depth: 122 mm
Outlet nozzle (outside): Ø 80 mm



Build-in: Air inlet to be held free. Minimum distance to wall: 10 mm.

Outlet: The outlet nozzle is meant for the mounting of a standard flexible aluminium hose. Such compressed flexible hose can be supplied.

Air volume: 72 l/sec measured at the outlet nozzle.
A precondition for a high air volume is that the flexible hose is kept as short and as straight as possible to avoid loss of pressure.

Motor: 110 W radial fan motor with sealed ball bearings. Brushless. Humidity protected. Automatic thermal cut-out.

Heating element: 1500 W Chromium-nickel filament coil mounted in a non-inflammable cone. Automatic thermal cut-out.

Timer: Electronic timer unit to be activated through external IR sensor.

IR sensor: External IR sensor unit controlled by the timer is included with the dryer unit.

Connections: Power supply: 230 Volt, 50 Hz - through WAGO type connector.
Connector for IR sensor: WAGO type connector.
Insulation Class: Class I. - The machine may be earthed through WAGO connector or externally on two 6 mm threaded grounding studs.

Functionality: Upon activation, the machine will run until hands are removed again.
Automatic stop after 3 min. of continuous use.

Guarantee: 300,000 cycles – or 5 years from date of invoice – whichever comes first.

Weight: Gross weight: 5.5 kg; net weight: 4.8 kg.

Compliancy:

EN 50155	EN 60335-1:2012 incl. AC:2014 and A11:2014
EN 50121-1:2006 incl. AC:2008	EN 60335-2-23:2003 incl. (AC:2012), A2:2015, (A1:2008) and (A11:2010)
EN 61000-3-2:2014	EN 62233:2008 incl. AC:2008
EN 61000-3-3:2013	EN 61000-6-1:2007
EN 61373:2010	EN 61000-6-3:2007 incl. A1:2011 with AC :2012
EN 45545-2:2013+A1:2015	EN 50581:2012
EN 45545-5:2013+A1:2015	



DAN DRYER A/S